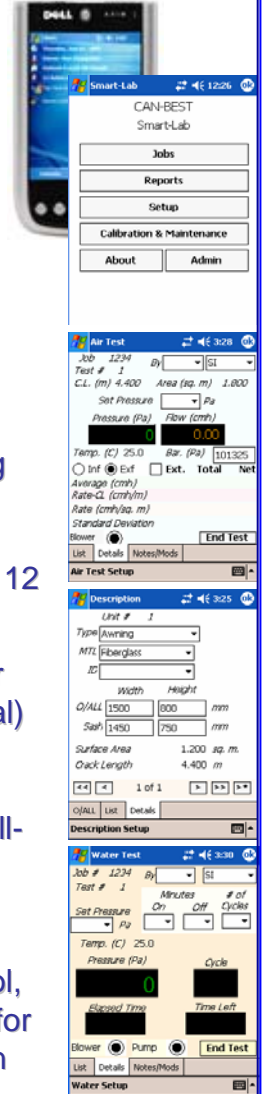




 Bluetooth®



- ✓ Handheld computer operation
- ✓ Bluetooth® wireless communication with handheld
- ✓ Easy to use by anyone with minimum training
- ✓ Ideal for in-house research, product testing and quality control
- ✓ Portable for field testing
- ✓ Air and water infiltration testing
- ✓ Structural Testing (Optional)
- ✓ Deflection measurement up to 12 points (Optional)
- ✓ Calibrated water spray rack for 8'x8' coverage or greater (Optional)
- ✓ High quality instrumentation
- ✓ Heavy-duty & smart-looking roll-away carrying case
- ✓ Calibration Certificate
- ✓ Software for monitoring, control, data collection and reporting and for desktop computer synchronization



www.CAN-BEST.com

Window & Insulating Glass Testing Laboratory

Canadian Building Envelope Science and Technology

38 Regan Road, Unit 4, Brampton, Ontario, Canada, L7A 1C6

Tel.: (905) 840-2014 • Fax.: (905) 840-2847 • E-mail: lab@can-best.com

Your partner in successful fenestration research, testing and investigation!



Conseil canadien des normes



First in Thermal

First in Canada